

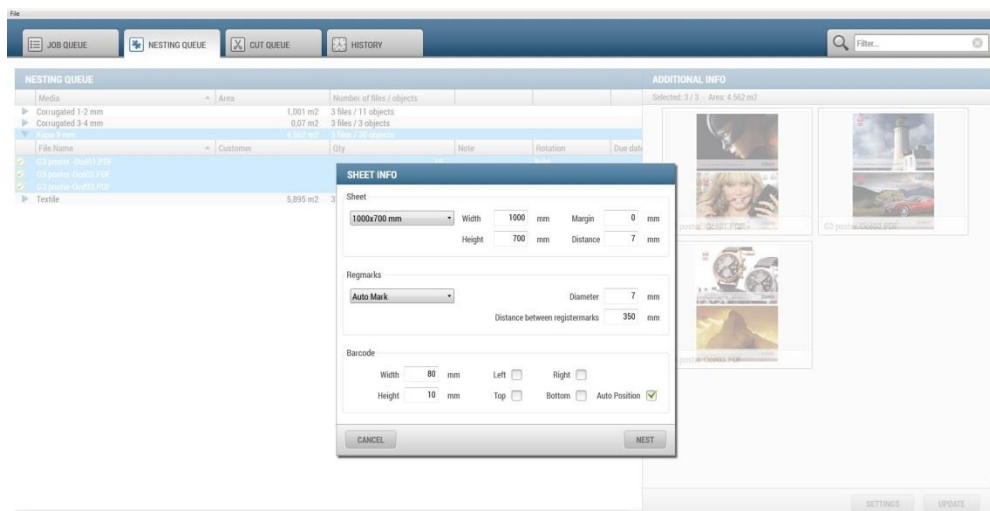
Prepare-it 5.3

Highlights – free upgrade!

1. New **Nesting dialog** in Nesting Queue to setup/edit nesting parameters directly in Prepare-it interface is available.
2. A **CANCEL** button in the nesting progress dialog enables the operator to stop a nesting process on the server.
3. Enhanced **true-shape nesting** of files with **open lines**.
4. Support for **Common line** cutting.

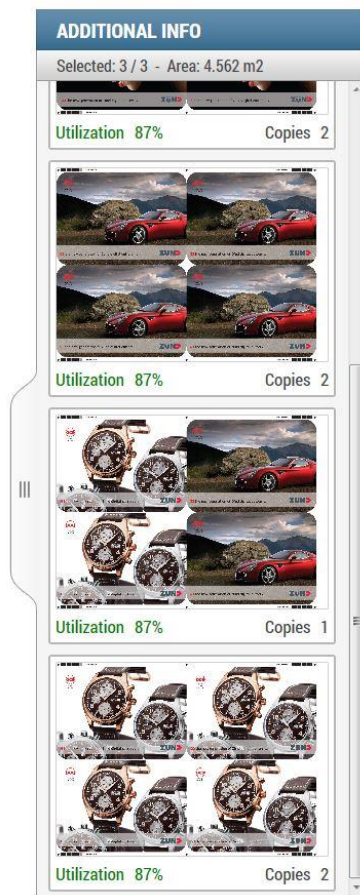
1. Nesting Settings dialog

- A new **button** in the expanded view of the Nesting Queue is available with Prepare-it 5.3. From this dialog the user can make choice of sheet format, registration marks strategy and placement of barcodes.



Edit nesting parameters directly in the Prepare-it interface.

- The settings chosen are applied for all sheets in a nesting sequence. The EDIT SIZE button for each sheet remains available in case the user wants to change one of the layouts in a sequence of sheets nested.

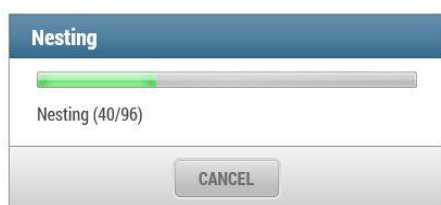


It is now possible to edit all sheets or a single sheet!

- The SETTINGS dialog can be edited prior to starting nesting, which wasn't possible with version 5.2.
- The functionality reduces the need to access nesting settings on media level within the Cut Media Manager.

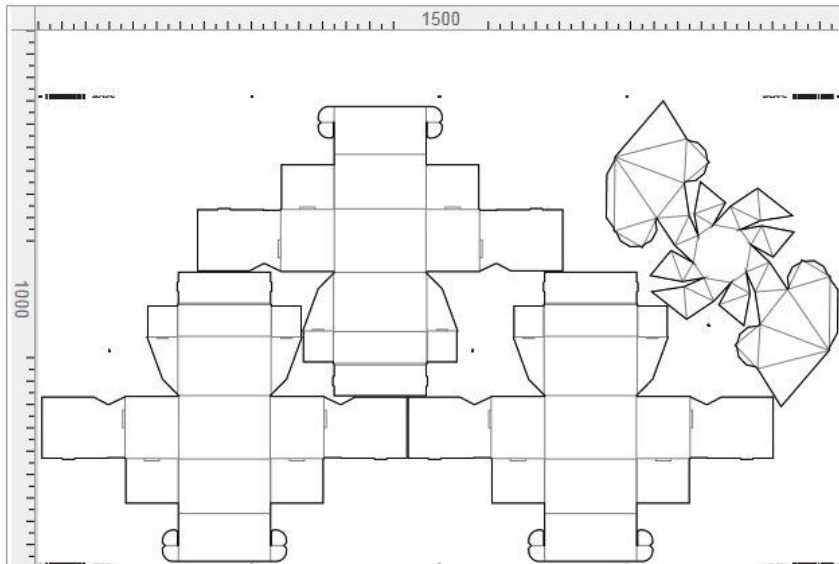
2. Nesting CANCEL button

- Cancelling of a running nesting process is possible with Prepare-it 5.3. This allows the user to abort a nesting process, change settings and do a new UPDATE.
- Stopping the nesting engine may take some seconds depending where in the processes abortion is made.



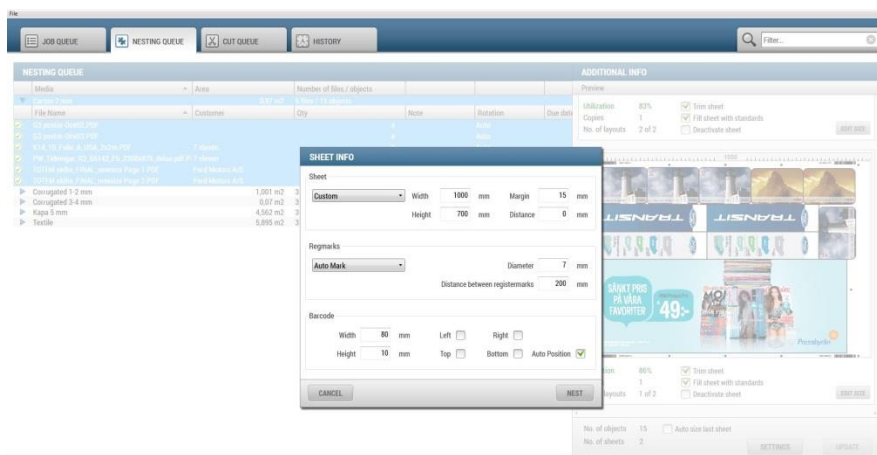
3. Enhanced nesting of jobs with “open lines”

- Prepare-it 5.3 has been further enhanced to support true-shape nesting with jobs that contains open lines. This version is more tolerant and will be able to true shape most files even that open lines are within the cut path selections.



4. Common line cutting

- Prepare-it 5.3 now supports common line cutting. This greatly reduces cut times and saves on material when in use.



Nesting distance set to zero (0 mm) in Prepare-it automatically creates common line!

- Simply nest with zero distance in Prepare-it to prepare for common line cutting. If the media has a default oversize of e.g. 2 mm and the nesting distance is set to 0mm, then oversize will be deleted automatically.
- NOTE, that “distance between nesting jobs” works slightly different now with version 5.3! The distance is now between **cut paths**. Previously the distance was between **oversize**!

Prepare-it 5.3 uses distance between *cut paths*!



Earlier versions of Prepare-it uses distance between *oversize*!



The above red lines indicate which parts of a nesting that could be used for common line cutting.

- Common line cutting on this particular job saves approx.. 27% on actual cut time in comparison to “normal” cutting.